

## PR300 Women's Long Sleeve Poplin Blouse

### Description

A stylish long sleeve ladies blouse that comes in 27 colours. This blouse offers the wearer a semi-fitted feminine styling with a soft collar, bust, back darts and a rounded bottom hem.

### Product Features:

- Soft collar styling
- Rounded bottom hem
- Feminine fit style with bust and back darts.
- Two button adjustable cuff

### Available In:

6, 8, 10, 12, 14, 16, 18, 20, 22, 24, 26, 28\*, 30\*

### Certifications:

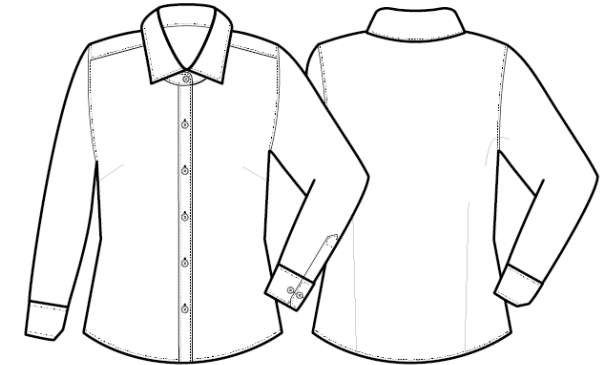


### Colours:

Colour	Pantone	C	M	Y	K	Colour	Pantone	C	M	Y	K
Aqua	344c	32	0	30	0	Navy	533c	95	72	15	67
Aubergine	7449c	65	98	21	83	Orange	172c	0	73	87	0
Black	Black c	0	0	0	100	Pink	670c	1	17	0	0
Bottle	7736c	56	0	58	78	Purple	7447c	77	85	6	18
Brown	4975c	36	84	59	85	Red	201c	7	100	68	32
Burgundy	209c	20	97	40	58	Rich Violet	7677c	68	78	0	0
Dark Grey	425c	52	29	30	78	Royal	7686c	100	73	0	0
Emerald	7728c	93	0	75	55	Sapphire	2144c	95	53	0	0
Hot Pink	215c	66	100	26	24	Silver	429c	21	11	9	23
Khaki	7536c	11	13	30	32	Steel	Cool grey 11c	44	34	22	77
Light Blue	2707c	20	6	0	0	Turquoise	7703c	79	2	10	11
Lilac	2085c	9	16	0	0	White	White	0	0	0	0
Lime	2302c	33	7	74	5						
Mid Blue	2135c	62	39	0	0						
Natural	4755c	3	16	20	9						

### Fabric:

65% Polyester, 35% Cotton Poplin, 105gsm.  
White: 115gsm.



### Suggested Decoration:

Screen Print, Transfer Print, Embroidery

### Country of Origin:

Bangladesh

### Commodity Code:

6206400000

### Features:



### Wash Care:



### Carton Information:

Sizes	Carton	Pack	SKU's	Carton Weight	Carton Dimentions
6 - 20	36	6	216	8.3kg	58cmx38cmx19cm
22 - 26	12	3	81	3.7kg	36cmx28cmx15cm
28 - 30	6	2	28	3.7kg	36cmx28cmx15cm

### Garment Sizes:

Size	6	8	10	12	14	16	18	20	22	24	26	28	30
Bust to fit"	31	33	35	37	39	41	43	45	47	49	51	53	55
Bust to fit cm	79	84	89	94	99	104	109	114	119	124	129	134	139
Bust actual cm	89	94	99	104	109	115	119	124	129	134	139	144	149
Call size	2XS	XS	S	M	L	XL	2XL	3XL	4XL	5XL	6XL	7XL	8XL
Back length cm	62	63	64	65	66	67	68	69	71	73	75	75	75